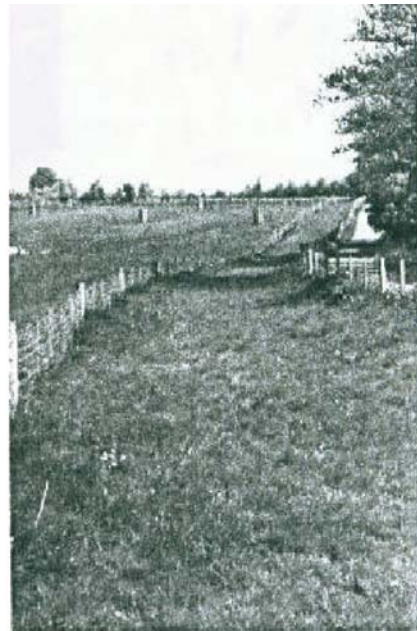


# Eglinton Country Park

## Description

**Eglinton Country Park is one thousand acres of beautiful Ayrshire countryside. The park includes woodlands, open countryside a river and a loch all of which can be experienced from horseback.**

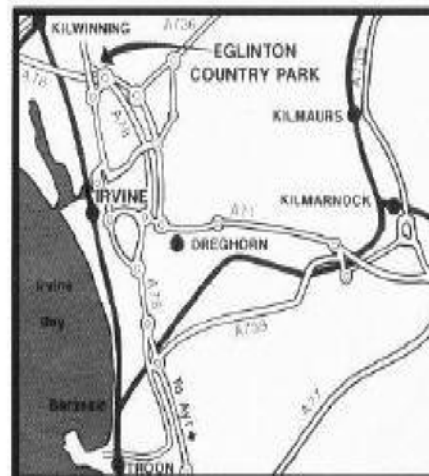
Within the park there is an extensive bridleway network extending to approximately 11 km. Shared paths make up 5km of the bridleway. On these sections you must give way to walkers and cyclists. The remaining 6km are exclusively for horse riders and on these grassy tracks you can allow your horses to really stretch their legs. The tracks border fields and meander through woodland. In spring and summer the going is generally good but can be wet and heavy in winter



*An example of one of the bridleways.*

## How to get there

**Eglinton Country Park is located on the outskirts of Irvine, within an hours drive of Glasgow city centre. From Glasgow: take the M77 towards Kilmarnock, A71 for Irvine, then north on the A78 towards Greenock. Leave the A78 at Eglinton Junction and follow signs for Eglinton Country Park**



## Where to Park

**Ample parking is available at the Visitor Centre Car Parks. Lorries and horseboxes can park in the Coach Park during the winter months and in the Overflow Car Park Field during the summer when the Coach Park is busy. There is a café adjacent to the**

visitor centre that will provide snacks and a selection of children's play facilities so the "significant other" can keep the kids amused while you ride.

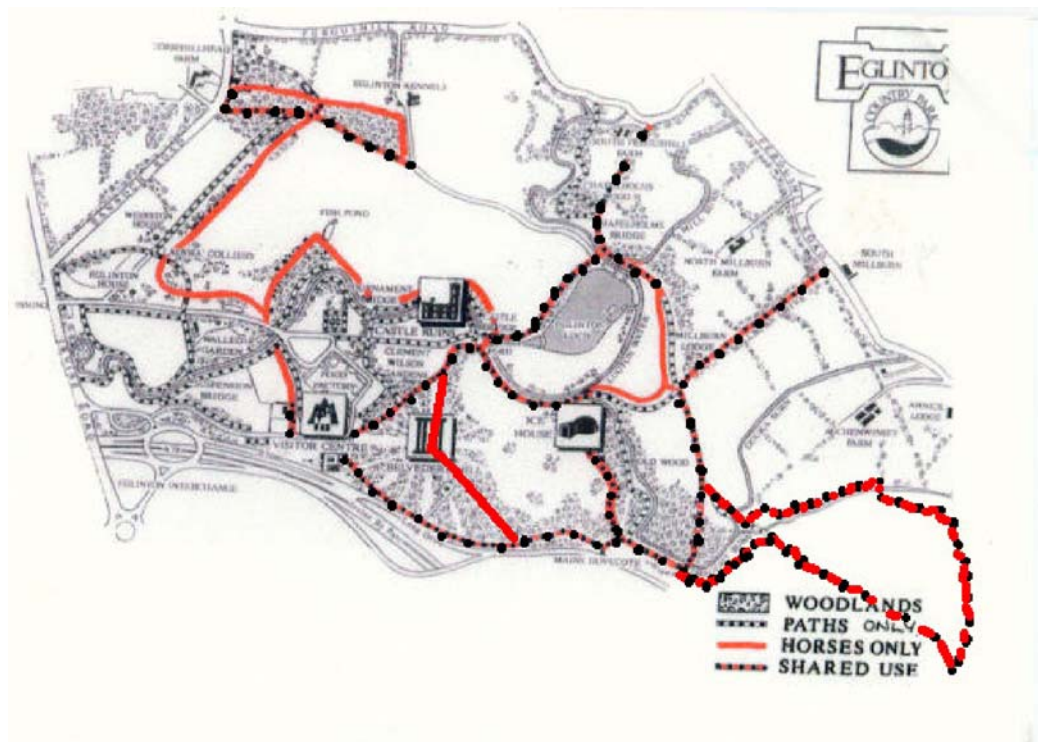
## Charges/Regulations

Charges for the use of the bridleways at Eglinton have been in place before the critical date in the Land Reform legislation and therefore continue to be permitted.

In the interests of safety for both horse riders and other Country Park users, a permit system is in operation. A day bridleway permit costs £3.20 obtainable from the Visitor Centre. To obtain a permit, in addition to the cash, you will need proof of third party liability insurance cover; British Horse Society Gold Membership will do the job nicely. The park has a Ranger Service and you may be asked to produce your permit.

The Park Riding Code is primarily to ensure the safety of all park users. Stick to the delineated riding routes. On the shared sections of bridleway keep your horse to a walk and give way to cyclists and pedestrians. If your horse dungs please get off and kick it to the side of the path. Cyclists can't always treat it as a roundabout and a heap of horse dung can be a danger in the wet. It is also a very unpleasant experience for the partially sighted stepping into a big heap of poo. On the dedicated equestrian grass tracks this is not an issue. Wear a hard hat at all times, close gates behind you and take no loose animals with you. It's all common sense really

## Routes



As can be seen from the plan there are a variety of route combinations that can be ridden. The shared paths are mainly whin-topped hard core and the gallops are grass,

cut and rolled on a regular basis. The going on the gallops tends to be good in summer but can be heavy in winter and during wet spells. A number of the routes include bridges over streams and there is a ford on the river. Depending on the combinations chosen and speed on the grass tracks, riding time can vary from an hour to two plus hours.

## **Maps**

A plan showing the routes that may be ridden will be made available from the Visitor Centre with the daily permit.

## **Useful Contact Numbers**

**The Visitor Centre,  
Eglinton Country Park Irvine Tel 01294 551776 Fax 01294  
556467 E-mail [eglintoncountrypark@north-ayrshire.gov.uk](mailto:eglintoncountrypark@north-ayrshire.gov.uk)**